

Installation Guide

QwikFoot Threaded Inserts

This installation instruction is for all QwikFoot Threaded Inserts as listed in the table below. For the design of Threaded Inserts please refer to the Ancon Threaded Insert Design Guide available on www.ancon.com.au.

Thread	Length (mm)				
	45*	50	70	96	120
M10		FF1050Z FF1050S316 FF1050G			
M12	FF1245G FF1245S316	FF1250Z FF1250G FF1250S316	FF1270Z FF1270G FF1270S316	FF1296Z FF1296G	
M16	FF1645G FF1645S316		FF1670Z FF1670G FF1670S316	FF1696ZH FF1696G FF1696S316	
M20	FF2045G FF2045S316		FF2070ZH FF2070G FF2070S316	FF2096ZH FF2096G FF2096S316	FF20120ZH FF20120G
M24				FF2496Z FF2496G FF2496S316	
UC16				UCQF1696Z	

*Short QwikFoot

Product finishes:

Z / ZH: Zinc Plated G: Hot-dip galvanized S316: Stainless Steel Grade A4

1A Installation of QwikFoot Threaded inserts with Nailing Plates

For Threaded Inserts that are installed to the edge or bottom of timber formwork it is recommended to use Ancon NP nailing plates to attach the Threaded Insert to the formwork.

Table 2 – Ancon Nailing Plates (Product Code NP)

Thread	M10	M12	M16	M20	M24	3/4" Unicoil
Product Code	NP10U	NP12U	NP16U	NP20U	NP24U	NPB134
Colour	Purple	Red	Green	Blue	Yellow	Red

Magnetic Nailing Plates for securing to steel moulds

Product Code: NP10M, NP12M, NP16M, NP20M, NP24M

QwikFoot



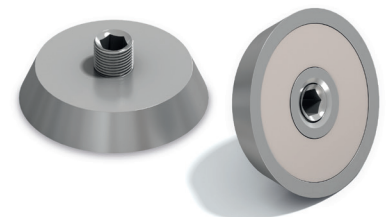
Short QwikFoot



Nailing Plate



Magnetic Nailing Plate

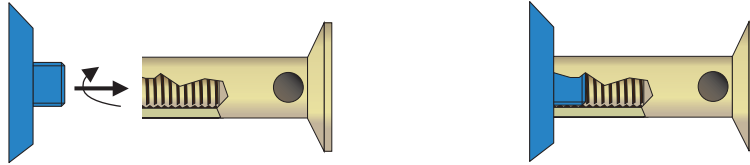


Installation Guide

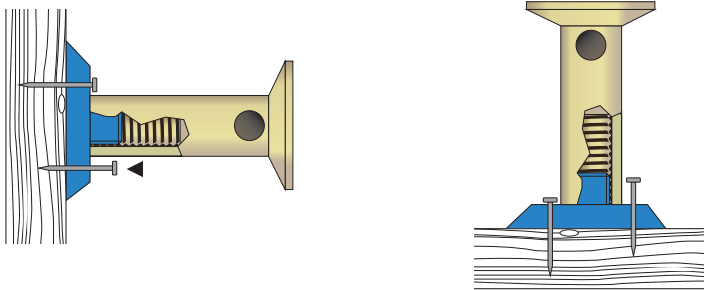
QwikFoot Threaded Inserts

Installation

1A-1 Attach the Nailing plate to the Threaded Insert

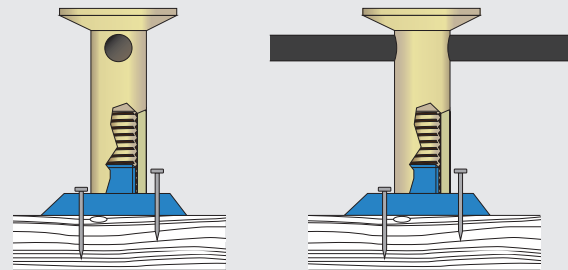


1A-2 Nail the Threaded Insert to the formwork



1A-3 Install reinforcement bars as required

QwikFoot Threaded Insert can be used with a cross bar or without a cross bar, please refer to the Threaded Insert Design Guide for the diameter of the cross hole. The cross bar doesn't affect the capacity of QwikFoot insert.



1B Installation of QwikFoot Threaded inserts with Ancon Precast Chair and Antenna Cap or Nailing Plate

1B-1 Choose the right Precast Chair for the application based on slab thickness and QwikFoot Threaded Insert.

Table 3 – Ancon Precast Chair (Product Code PC)

Slab thickness (mm)	Product code PC Precast Chair for use with	
	70-mm QwikFoot	96-mm QwikFoot
100	PC125	-
120	PC145	-
125	PC150	- / PC125
150	-	PC145* / PC150
170	-	- / PC170
175	-	PC170* / PC175
180	-	PC 175* / PC180
200	-	PC195* / PC200

* - for use with nailing plate instead of antenna cap

Note: Short QwikFoot and 50mm QwikFoot do not fit in the precast chair.



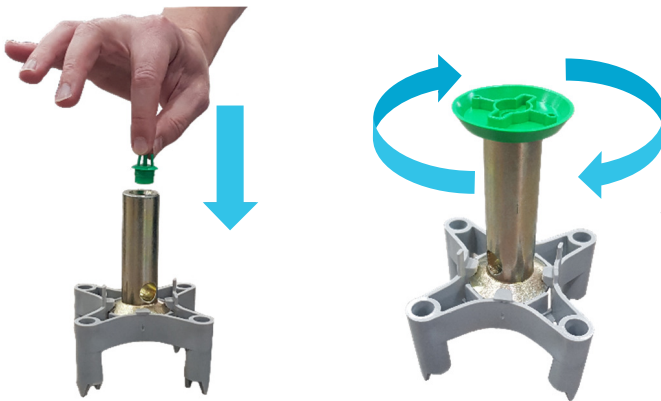
Installation Guide

QwikFoot Threaded Inserts

1B-2 Feed the QwikFoot Threaded Insert into the precast Chair through the bottom until it clicks in.

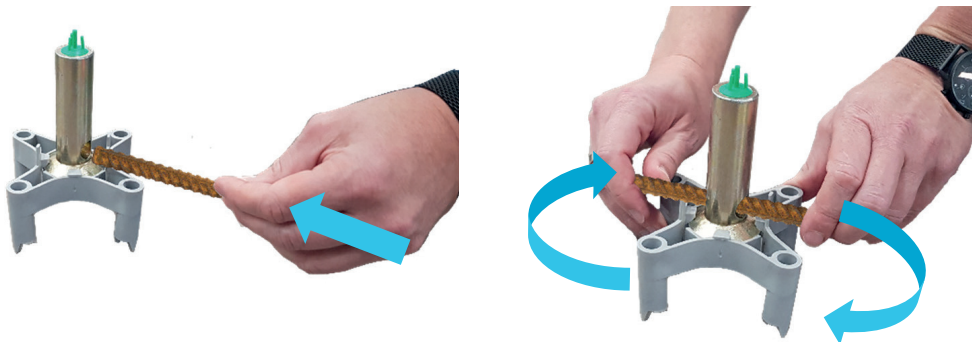


1B-3 Attach the Antenna cap or nailing plate to the top of the QwikFoot Threaded Insert.



When using the nailing plate it is recommend to apply grease to the base of the nailing plate.

1B-4 Insert Bar through the cross hole and lock in the Precast Chair by rotating the precast chair clockwise.



1B-5 Place QwikFoot Threaded Insert at the specified location and fix the cross bar to the reinforcement to avoid displacement of the Insert during concrete pour.

2 Concrete Placement



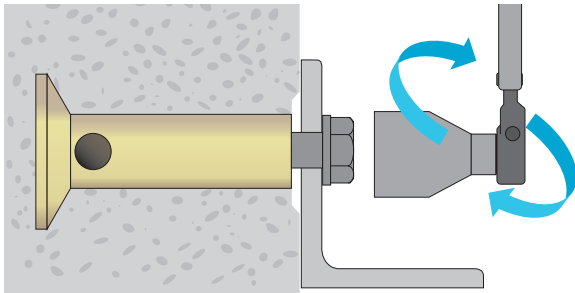
Special care is required during the compaction of the concrete around the threaded insert to avoid honeycombing and voids around the foot of the Threaded Insert.

Installation Guide

QwikFoot Threaded Inserts

3A Bolt Installation for metric Threaded Inserts

Ancon QwikFoot Threaded Inserts are designed to exceed the tensile and shear capacity of grade 4.6 bolts. Leviat recommends to use the Threaded Inserts with bolts of this grade. If bolts of a higher grade are installed, the torque must be limited to the installation torque of a grade 4.6 bolt to avoid possible damage to the Threaded Insert and surrounding concrete.



Install the bolt using a calibrated torque wrench with the torque limited to the value shown in the table below.

Table 4 – Installation torques for metric bolts with Ancon QwikFoot Threaded Inserts

Bolt Size	Installation Torque (Nm)
M10	18
M12	31
M16	75
M20	150
M24	250



Electric and air operated Impact Wrenches (so called rattle guns) apply uncontrolled torque to the bolt which can cause damage to bolt, Threaded Insert and supporting concrete.

Leviat recommends the use of torque-limited wrenches for the installation of bolts in Threaded Inserts.

Threaded Inserts require a minimum thread engagement of 1.5 times the thread diameter.

3B Installation of Unicoil bolts in Unicoil Threaded Inserts for temporary support according to AS 3850

The bolt should be installed using a calibrated torque wrench with the torque limited to the value shown in the table below.

Installation torque for Unicoil bolts used with Ancon QwikFoot Threaded Inserts:

Bolt Size	Installation Torque (Nm)
³ / ₄ " Unicoil Bolt	100